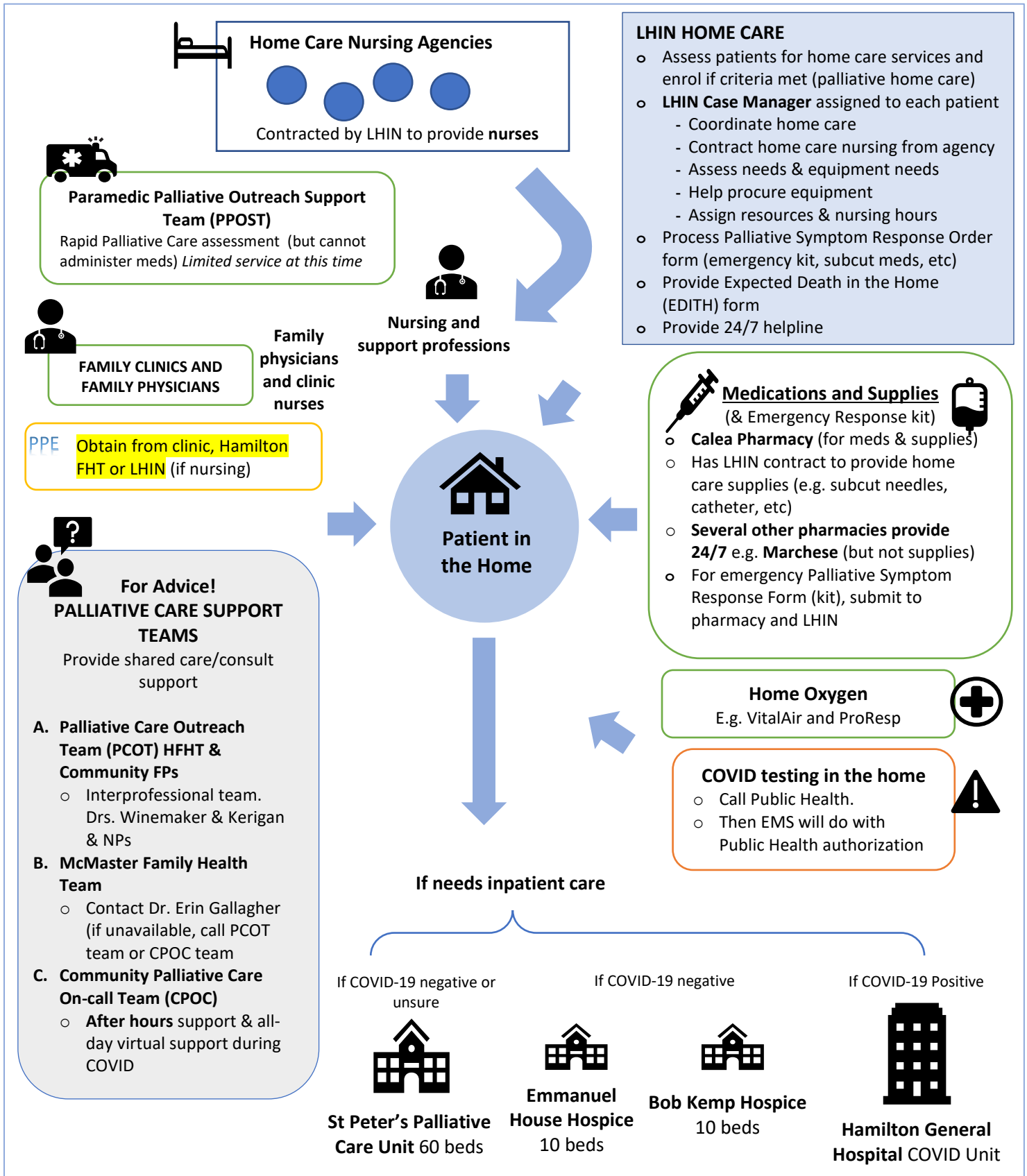


MAP OF **PALLIATIVE CARE SERVICES** IN THE HAMILTON AREA



- LHIN HOME CARE**
- Assess patients for home care services and enrol if criteria met (palliative home care)
 - LHIN Case Manager** assigned to each patient
 - Coordinate home care
 - Contract home care nursing from agency
 - Assess needs & equipment needs
 - Help procure equipment
 - Assign resources & nursing hours
 - Process Palliative Symptom Response Order form (emergency kit, subcut meds, etc)
 - Provide Expected Death in the Home (EDITH) form
 - Provide 24/7 helpline

- Medications and Supplies (& Emergency Response kit)**
- Calea Pharmacy (for meds & supplies)
 - Has LHIN contract to provide home care supplies (e.g. subcut needles, catheter, etc)
 - Several other pharmacies provide 24/7 e.g. Marchese (but not supplies)
 - For emergency Palliative Symptom Response Form (kit), submit to pharmacy and LHIN

Home Oxygen
E.g. VitalAir and ProResp

- COVID testing in the home**
- Call Public Health.
 - Then EMS will do with Public Health authorization

